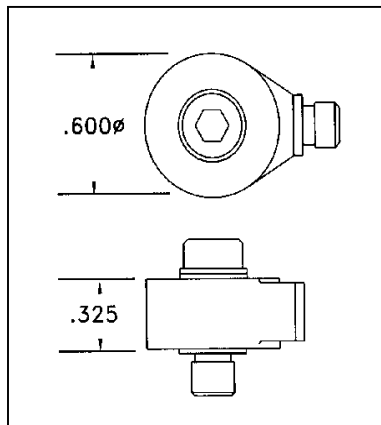


- *360 Deg Cable Rotation
- *Sensitivity 14 pC/g
- *Low Base Strain Sensitivity
- *Electrically Isolated

The Model 704D “ring-shaped” Piezoelectric Accelerometer permits easy installation in locations that are inaccessible with standard shaped units. The mounting arrangement of this design, using a bolt-down technique through a center clearance hole, allows complete 360-degree rotation of the output connector to any convenient position.

Although the unit is very small in size and lightweight, the unique and proven case design provides complete mechanical isolation of the sensing element so that the accelerometer is insensitive to mounting strains, bending stresses, cable whip, pressure variations and most heat transients. Internal electrical isolation minimizes ground loop problems from noise currents. *Consult the factory for customized versions of this sensor.*



Specifications

Transfer / Electrical	704D
Charge Sensitivity ¹	14 pC/g, Nominal 10 pC/g, Minimum
Capacitance	900 +/-200 pF
Frequency Linearity ²	+/-5% Max 2 Hz To 6,000 Hz
Mounted Resonant Frequency	30 KHz, Nom.
Transverse Sensitivity	5% Max
Amplitude Linearity	+/-1.0% (BFSL)
Insulation Resistance	10,000 M Ohm Min, 50 VDC Test
Isolation Resistance	100M Ohm, Min.
Environmental	
Vibration Limit	1,000 g Max (Sine)
Shock Limit	2,000 g Max
Temperature Range	-65 To +350 Deg F (-54 To +175 Deg C)
Humidity ³	0 To 95% R.H. (Non-Condensing)
Base Strain Sensitivity	0.003 g/uE Equiv, Typical
Electromagnetic Sensitivity	0.005 g (Equiv / 100 Gauss)
Acoustic Sensitivity	0.005 g RMS (Equiv @ 150 dB SPL)
Physical	
Configuration	Ring Shear
Size	0.600 In. Dia. x 0.325 In. H (15.2 mm Dia. x 8.26 mm H)
Weight	0.42 Oz (12 Gm)
Case Material	18-8 Stainless Steel
Electrical Interface	Coaxial 10-32 Thread
Mounting	6-32 Thru Hole (360 Deg Mounting)

Accessories Supplied:

- (1) Miniature Cable Assy, LNHT-10'
- (1) 6-32 x 0.5"L Bolt, St Stl.
- (1) Hardwood Storage Case
- (1) Standard Calibration Data
- (1) Certificate of Calibration Traceable to N.I.S.T.

NOTES:

- ¹ At +75 Deg F, 10g Peak, 100Hz; Lower Frequency Limit is Determined by Associated Electronics
- ² Referenced to Sensitivity @ 100 Hz.
- ³ With Connector Protected or Sealed, Unit is Epoxy Sealed